

HSS



Leading Through Innovation



HAND TAPS

HANDGEWINDEBOHRER









- General Tapping, HSS & HSS-E
- Für normales Gewindeschneiden. HSS und HSS-E

SELECTION GUIDE

HAND TAPS

General Tapping, HSS & HSS-E

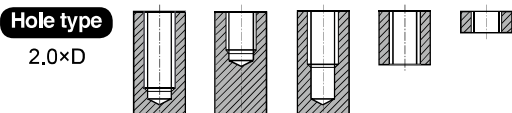
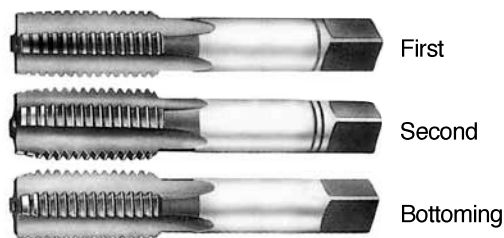
HSS HAND TAPS

EDP No.	MODEL	Tool Material	Standard	Work Material	Dimensions	Tolerance	Chamfer	Thread Depth	Surface Treatment	PAGE
T7109		HSS	M	GS	DIN 352	ISO 2/6H	I / II / III	2.0D	Bright	641
T7343		HSS	M-LH	GS	DIN 352	ISO 2/6H	I / II / III	2.0D	Bright	642
TC353		HSS-E	M	VG	DIN 352	ISO 2/6H	I / II / III	2.0D	Bright	643
TB373		HSS-E	M	VA	DIN 352	6HX	I / II / III	2.0D	Vap	644
T7309		HSS	MF	GS	DIN 2181	ISO 2/6H	I / III	2.0D	Bright	645
T7363		HSS	UNC	GS	DIN 351	2B	I / II / III	2.0D	Bright	647
T7509		HSS	UNF	GS	DIN 2181	2B	I / III	2.0D	Bright	648
T7609		HSS	BSW	GS	DIN 351	-	I / II / III	2.0D	Bright	649

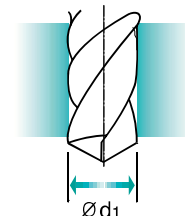
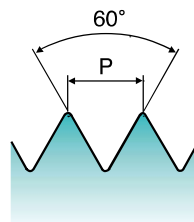
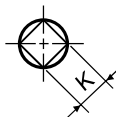
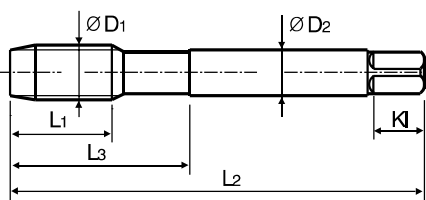
M ISO metric coarse threads DIN 13

- Metrisches ISO-Gewinde DIN 13**
- ISO MÉTRIQUE DIN13**
- ISO Metrico passo grosso DIN 13**

- ▶ This tap is a serial hand tap in set, First, Second and Bottoming.
- ▶ Bottoming tap of set has final internal thread dimensions only.
- ▶ Dies ist ein Handgewindebohrer im Satz mit Vor-, Mittel- und Fertigschneider.
- ▶ Nur der Fertigschneider kann das gewünschte Gewinde schneiden.



Sets of taps
Gewindebohrer - Satz



Unit : mm

SIZE	Pitch	EDP No.	Thread Length	Overall Length	Neck Length	Shank Diameter	Square Size	Square Length	No. of Flute	Tapping Drill Diameter
ØD1	P	Bright	L1	L2	L3	ØD2	K	KI	Z	Ød1
M2 × 0.4		T7109139	8	36	13	2.8	2.1	5	3	1.6
M2.2 × 0.45		T7109159	9	36	13	2.8	2.1	5	3	1.75
*M2.3 × 0.4		T7109199	9	36	13	2.8	2.1	5	3	1.9
M2.5 × 0.45		T7109179	9	40	15	2.8	2.1	5	3	2.05
*M2.6 × 0.45		T7109499	9	40	15	2.8	2.1	5	3	2.1
M3 × 0.5		T7109209	11	40	18	3.5	2.7	6	3	2.5
M3.5 × 0.6		T7109229	13	45	21	4	3	6	3	2.9
M4 × 0.7		T7109249	13	45	21	4.5	3.4	6	3	3.3
M4.5 × 0.75		T7109269	16	50	25	6	4.9	8	3	3.7
M5 × 0.8		T7109289	16	52	26	6	4.9	8	3	4.2
M5.5 × 0.9		T7109N69	18	56	27	6	4.9	8	3	4.6
M6 × 1		T7109319	18	56	27	6	4.9	8	3	5
M7 × 1		T7109349	18	56	28.5	6	4.9	8	3	6
M8 × 1.25		T7109369	20	63	34	6	4.9	8	3	6.8
M9 × 1.25		T7109399	20	63	34	7	5.5	8	4	7.8
M10 × 1.5		T7109429	22	70	38	7	5.5	8	4	8.5
M11 × 1.5		T7109469	22	70	38	8	6.2	9	4	9.5
M12 × 1.75		T7109509	24	80	45	9	7	10	4	10.2
M14 × 2		T7109549	26	80	45	11	9	12	4	12
M16 × 2		T7109609	27	80	45	12	9	12	4	14
M18 × 2.5		T7109659	30	95	58	14	11	14	4	15.5
M20 × 2.5		T7109709	32	95	58	16	12	15	4	17.5
M22 × 2.5		T7109749	32	100	62	18	14.5	17	4	19.5
M24 × 3		T7109789	34	110	69	18	14.5	17	4	21
M27 × 3		T7109869	36	110	69	20	16	19	4	24
M30 × 3.5		T7109949	40	125	77	22	18	21	4	26.5
M33 × 3.5		T7109A49	40	125	77	25	20	23	4	29.5
M36 × 4		T7109B39	50	150	88	28	22	25	4	32
M39 × 4		T7109C09	50	150	88	32	24	27	4	35
M42 × 4.5		T7109C89	56	150	88	32	24	27	4	37.5
M45 × 4.5		T7109D59	58	160	93	36	29	32	4	40.5
M48 × 5		T7109E29	65	180	102	36	29	32	4	43
M52 × 5		T7109F39	65	180	102	40	32	35	4	47

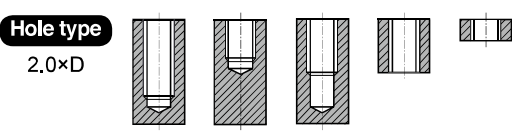
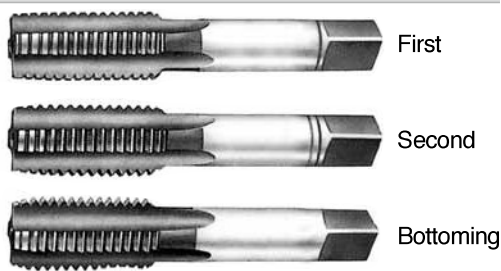
▶ *DIN profile not ISO

ISO metric coarse threads DIN 13

M-LH

- Metrisches ISO-Gewinde DIN 13**
- ISO MÉTRIQUE DIN13**
- ISO Metrico passo grosso DIN 13**

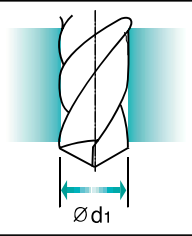
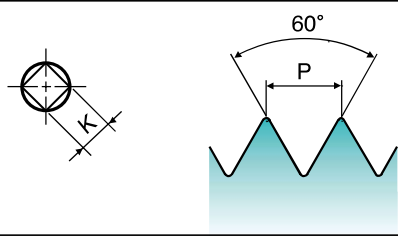
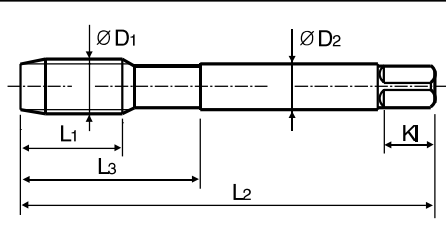
- ▶ This tap is a serial hand tap in set, First, Second and Bottoming.
- ▶ Bottoming tap of set has final internal thread dimensions only.
- ▶ Dies ist ein Handgewindebohrer im Satz mit Vor-, Mittel- und Fertigschneider.
- ▶ Nur der Fertigschneider kann das gewünschte Gewinde schneiden.



Material groups
GS

- HSS**
- DIN 352**
- 6H**
-
-
- Bright**

Sets of taps
Gewindebohrer - Satz



Unit : mm

SIZE	Pitch	EDP No.	Thread Length	Overall Length	Neck Length	Shank Diameter	Square Size	Square Length	No. of Flute	Tapping Drill Diameter
ØD1	P	Bright	L1	L2	L3	ØD2	K	KI	Z	Ød1
M3	× 0.5	T7343209	11	40	18	3.5	2.7	6	3	2.5
M3.5	× 0.6	T7343229	13	45	21	4	3	6	3	2.9
M4	× 0.7	T7343249	13	45	21	4.5	3.4	6	3	3.3
M4.5	× 0.75	T7343269	16	50	25	6	4.9	8	3	3.7
M5	× 0.8	T7343289	16	52	26	6	4.9	8	3	4.2
M6	× 1	T7343319	18	56	27	6	4.9	8	3	5
M8	× 1.25	T7343369	20	63	34	6	4.9	8	3	6.8
M10	× 1.5	T7343429	22	70	38	7	5.5	8	4	8.5
M12	× 1.75	T7343509	24	80	45	9	7	10	4	10.2
M14	× 2	T7343549	26	80	45	11	9	12	4	12
M16	× 2	T7343609	27	80	45	12	9	12	4	14
M18	× 2.5	T7343659	30	95	58	14	11	14	4	15.5
M20	× 2.5	T7343709	32	95	58	16	12	15	4	17.5
M22	× 2.5	T7343749	32	100	62	18	14.5	17	4	19.5
M24	× 3	T7343789	34	110	69	18	14.5	17	4	21
M27	× 3	T7343869	36	110	69	20	16	19	4	24
M30	× 3.5	T7343949	40	125	77	22	18	21	4	26.5

▶ LH=Left hand thread

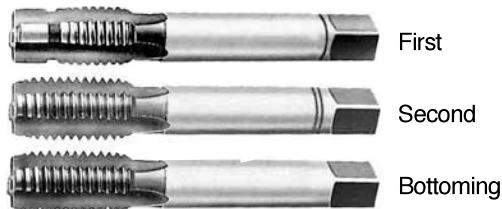
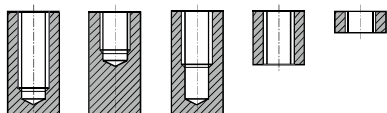
M ISO metric coarse threads DIN 13

- Metrisches ISO-Gewinde DIN 13**
- ISO MÉTRIQUE DIN13**
- ISO Metrico passo grosso DIN 13**

- ▶ This tap is a serial hand tap in set, First, Second and Bottoming.
- ▶ Bottoming tap of set has final internal thread dimensions only.
- ▶ Dies ist ein Handgewindebohrer im Satz mit Vor-, Mittel- und Fertigschneider.
- ▶ Nur der Fertigschneider kann das gewünschte Gewinde schneiden.

Hole type

2,0xD



HSS-E

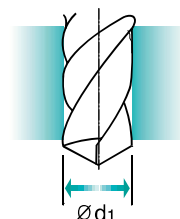
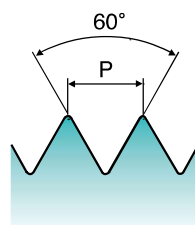
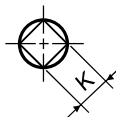
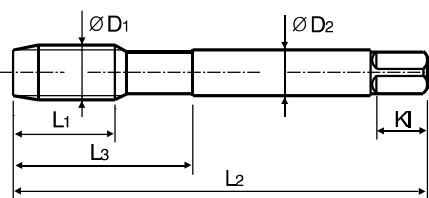
DIN 352

6H



Bright

Sets of taps
Gewindebohrer - Satz



Unit : mm

SIZE	Pitch	EDP No.	Thread Length	Overall Length	Neck Length	Shank Diameter	Square Size	Square Length	No. of Flute	Tapping Drill Diameter
ØD1	P	Bright	L1	L2	L3	ØD2	K	KI	Z	Ød1
M3	× 0.5	TC353209	11	40	18	3.5	2.7	6	3	2.5
M3.5	× 0.6	TC353229	13	45	21	4	3	6	3	2.9
M4	× 0.7	TC353249	13	45	21	4.5	3.4	6	3	3.3
M4.5	× 0.75	TC353269	16	50	25	6	4.9	8	3	3.7
M5	× 0.8	TC353289	16	52	26	6	4.9	8	3	4.2
M6	× 1	TC353319	18	56	27	6	4.9	8	3	5
M8	× 1.25	TC353369	20	63	34	6	4.9	8	3	6.8
M10	× 1.5	TC353429	22	70	38	7	5.5	8	4	8.5
M12	× 1.75	TC353509	24	80	45	9	7	10	4	10.2
M14	× 2	TC353549	26	80	45	11	9	12	4	12
M16	× 2	TC353609	27	80	45	12	9	12	4	14
M18	× 2.5	TC353659	30	95	58	14	11	14	4	15.5
M20	× 2.5	TC353709	32	95	58	16	12	15	4	17.5

- ▶ First with pilot guide

THREAD MILLS

CARBIDE TAPS

PRIME TAPS

COMBO TAPS

SPIRAL FLUTE TAPS

SPIRAL POINT TAPS

STRAIGHT FLUTE TAPS

COLD FORMING TAPS

NUT TAPS

STI TAPS

HAND TAPS

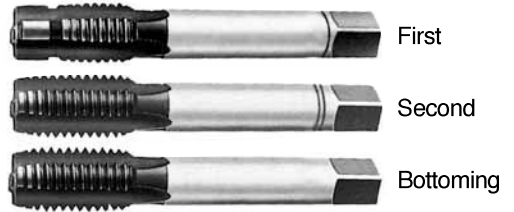
PIPE TAPS

TECHNICAL DATA

M ISO metric coarse threads DIN 13

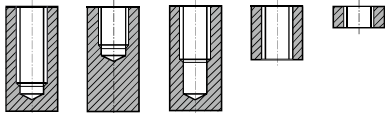
- Metrisches ISO-Gewinde DIN 13
- ISO MÉTRIQUE DIN13
- ISO Metrico passo grosso DIN 13

- ▶ This tap is a serial hand tap in set, First, Second and Bottoming.
- ▶ Bottoming tap of set has final internal thread dimensions only.
- ▶ Dies ist ein Handgewindebohrer im Satz mit Vor-, Mittel- und Fertigschneider.
- ▶ Nur der Fertigschneider kann das gewünschte Gewinde schneiden.



Hole type

2,0×D



Material groups

VA

HSS-E

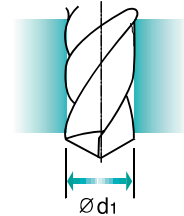
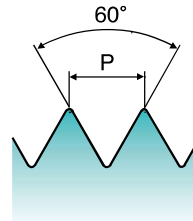
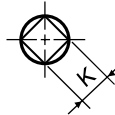
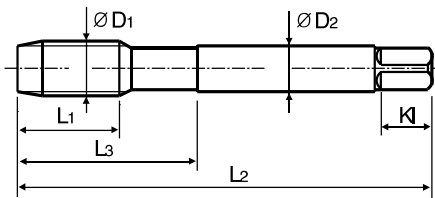
DIN 352

6HX



Vap

Sets of taps
Gewindebohrer - Satz



Unit : mm

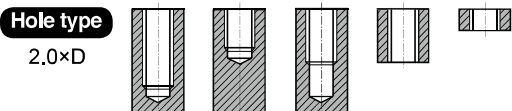
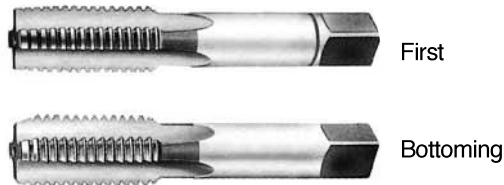
SIZE	Pitch	EDP No.	Thread Length	Overall Length	Neck Length	Shank Diameter	Square Size	Square Length	No. of Flute	Tapping Drill Diameter
ØD1	P	Vap	L1	L2	L3	ØD2	K	KI	Z	Ød1
M3	× 0.5	TB373209	11	40	18	3.5	2.7	6	3	2.5
M3.5	× 0.6	TB373229	13	45	21	4	3	6	3	2.9
M4	× 0.7	TB373249	13	45	21	4.5	3.4	6	3	3.3
M4.5	× 0.75	TB373269	16	50	25	6	4.9	8	3	3.7
M5	× 0.8	TB373289	16	52	26	6	4.9	8	3	4.2
M6	× 1	TB373319	18	56	27	6	4.9	8	3	5
M8	× 1.25	TB373369	20	63	34	6	4.9	8	3	6.8
M10	× 1.5	TB373429	22	70	38	7	5.5	8	4	8.5
M12	× 1.75	TB373509	24	80	45	9	7	10	4	10.2
M14	× 2	TB373549	26	80	45	11	9	12	4	12
M16	× 2	TB373609	27	80	45	12	9	12	4	14
M18	× 2.5	TB373659	30	95	58	14	11	14	4	15.5
M20	× 2.5	TB373709	32	95	58	16	12	15	4	17.5

- ▶ First with pilot guide

MF ISO metric fine threads DIN 13

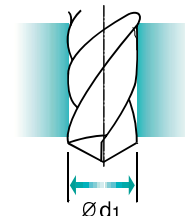
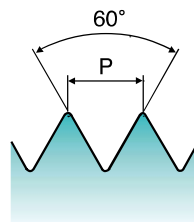
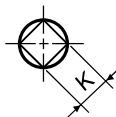
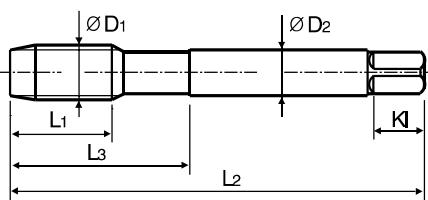
Metrisches ISO-Gewinde DIN 13
 ISO MÉTRIQUE PAS FINS DIN13
 ISO Metrico passo fine DIN 13

- ▶ Serial hand tap set in First and Bottoming.
- ▶ Bottoming tap of set has final internal thread dimensions only.
- ▶ Handgewindebohrersatz mit Vor- und Fertigschneider.
- ▶ Nur der Fertigschneider kann das gewünschte Gewinde schneiden.



Material groups: **GS** HSS DIN 2181 6H 60° I/III Bright

Sets of taps
Gewindebohrer-Satz



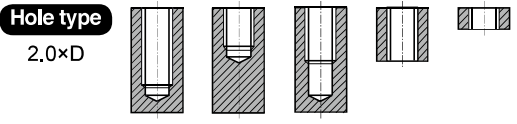
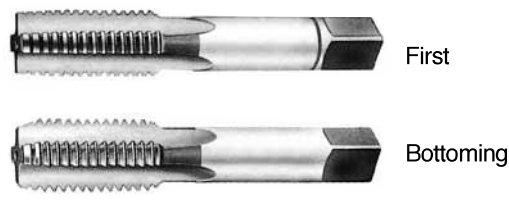
Unit : mm

SIZE	Pitch	EDP No.	Thread Length	Overall Length	Neck Length	Shank Diameter	Square Size	Square Length	No. of Flute	Tapping Drill Diameter
ØD1	P	Bright	L1	L2	L3	ØD2	K	KI	Z	Ød1
M3 × 0.35		T7309219	9	40	18	3.5	2.7	6	3	2.65
M4 × 0.5		T7309259	10	45	18	4.5	3.4	6	3	3.5
M5 × 0.5		T7309299	13	52	22	6	4.9	8	3	4.5
M6 × 0.75		T7309329	14	56	24	6	4.9	8	3	5.2
M6 × 0.5		T7309339	13	56	24	6	4.9	8	3	5.5
M7 × 0.75		T7309359	14	56	27	6	4.9	8	3	6.2
M8 × 1		T7309379	17	63	27	6	4.9	8	3	7
M8 × 0.75		T7309389	14	63	27	6	4.9	8	3	7.2
M8 × 0.5		T7309939	14	63	27	6	4.9	8	3	7.5
M9 × 1		T7309409	17	63	27	7	5.5	8	4	8
M10 × 1.25		T7309439	22	70	32	7	5.5	8	4	8.8
M10 × 1		T7309449	18	63	27	7	5.5	8	4	9
M10 × 0.75		T7309459	18	63	27	7	5.5	8	4	9.2
M11 × 1		T7309479	18	63	27	8	6.2	9	4	10
M12 × 1.5		T7309519	20	70	32	9	7	10	4	10.5
M12 × 1.25		T7309529	20	70	32	9	7	10	4	10.8
M12 × 1		T7309539	18	70	32	9	7	10	4	11
M13 × 1.5		T7309N19	20	70	32	11	9	12	4	11.5
M13 × 1		T7309N29	18	70	32	11	9	12	4	12
M14 × 1.5		T7309559	20	70	32	11	9	12	4	12.5
M14 × 1.25		T7309569	20	70	32	11	9	12	4	12.8
M14 × 1		T7309579	18	70	32	11	9	12	4	13
M15 × 1.5		T7309589	20	70	32	12	9	12	4	13.5
M15 × 1		T7309599	18	70	32	12	9	12	4	14
M16 × 1.5		T7309619	20	70	32	12	9	12	4	14.5
M16 × 1		T7309629	18	70	32	12	9	12	4	15
M18 × 2		T7309669	22	80	35	14	11	14	4	16

▶ NEXT PAGE

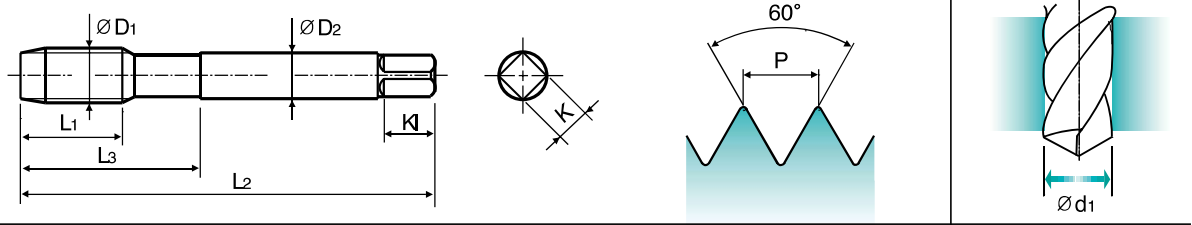
MF ISO metric fine threads DIN 13
 Metrisches ISO-Feingewinde DIN 13
 ISO MÉTRIQUE PAS FINS DIN13
 ISO Metrico passo fine DIN 13

- ▶ Serial hand tap set in First and Bottoming.
- ▶ Bottoming tap of set has final internal thread dimensions only.
- ▶ Handgewindebohrersatz mit Vor- und Fertigschneider.
- ▶ Nur der Fertigschneider kann das gewünschte Gewinde schneiden.*



Material groups **GS** HSS DIN 2181 6H 60° I/III Bright

Sets of taps Gewindebohrer-Satz

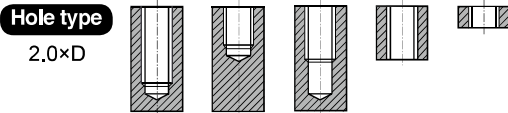
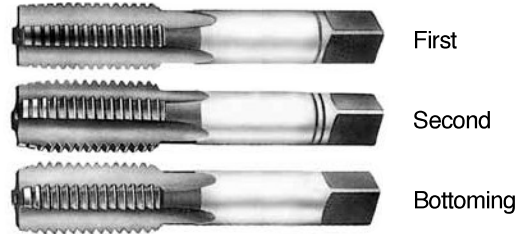


Unit : mm

SIZE	Pitch	EDP No.	Thread Length	Overall Length	Neck Length	Shank Diameter	Square Size	Square Length	No. of Flute	Tapping Drill Diameter
ØD1	P	Bright	L1	L2	L3	ØD2	K	KI	Z	Ød1
M18 × 1.5		T7309679	22	80	35	14	11	14	4	16.5
M18 × 1		T7309689	18	80	35	14	11	14	4	17
M20 × 2		T7309719	22	80	35	16	12	15	4	18
M20 × 1.5		T7309729	22	80	35	16	12	15	4	18.5
M20 × 1		T7309739	18	80	35	16	12	15	4	19
M22 × 2		T7309759	22	80	35	18	14.5	17	4	20
M22 × 1.5		T7309769	22	80	35	18	14.5	17	4	20.5
M22 × 1		T7309779	18	80	35	18	14.5	17	4	21
M24 × 2		T7309799	22	90	40	18	14.5	17	4	22
M24 × 1.5		T7309809	22	90	40	18	14.5	17	4	22.5
M24 × 1		T7309819	18	90	40	18	14.5	17	4	23
M25 × 1.5		T7309839	22	90	40	18	14.5	17	4	23.5
M25 × 1		T7309849	18	90	40	18	14.5	17	4	24
M26 × 1.5		T7309859	22	90	40	18	14.5	17	4	24.5
M26 × 1		T7309N59	18	90	40	18	14.5	17	4	25
M27 × 2		T7309879	22	90	40	20	16	19	4	25
M27 × 1.5		T7309889	22	90	40	20	16	19	4	25.5
M27 × 1		T7309899	18	90	40	20	16	19	4	26
M28 × 2		T7309909	22	90	40	20	16	19	4	26
M28 × 1.5		T7309919	22	90	40	20	16	19	4	26.5
M30 × 2		T7309969	22	90	40	22	18	21	4	28
M30 × 1.5		T7309979	22	90	40	22	18	21	4	28.5
M30 × 1		T7309989	18	90	40	22	18	21	4	29

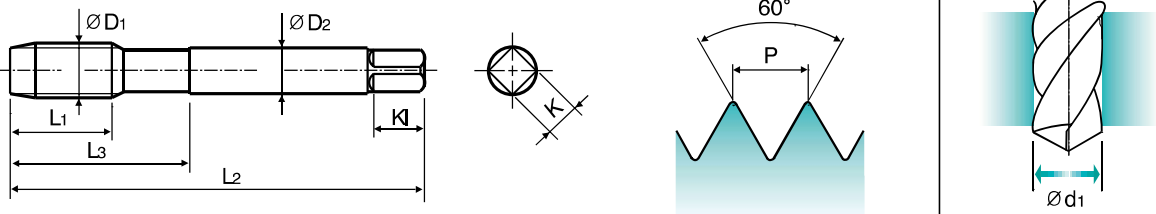
UNC Unified coarse threads
 Unified Grobgewinde
 UNC
 Unificato passo grosso

- ▶ This tap is a serial hand tap in set, First, Second and Bottoming.
- ▶ Bottoming tap of set has final internal thread dimensions only.
- ▶ Dies ist ein Handgewindebohrer im Satz mit Vor-, Mittel- und Fertigschneider.
- ▶ Nur der Fertigschneider kann das gewünschte Gewinde schneiden.



Material groups **GS** HSS DIN 351 2B 60° Bright

Sets of taps
 Gewindebohrer-Satz



Unit : mm

SIZE	TPI	EDP No.	Thread Length	Overall Length	Neck Length	Shank Diameter	Square Size	Square Length	No. of Flute	Tapping Drill Diameter
ØD1		Bright	L1	L2	L3	ØD2	K	KI	Z	Ød1
#2	- 56UNC	T7363089	9	36	13	2.8	2.1	5	3	1.8
#3	- 48UNC	T7363129	10	40	15	2.8	2.1	5	3	2.1
#4	- 40UNC	T7363169	10	42	18	3.5	2.7	6	3	2.3
#5	- 40UNC	T7363209	10	42	18	3.5	2.7	6	3	2.6
#6	- 32UNC	T7363249	11	45	18	4	3	6	3	2.85
#8	- 32UNC	T7363289	12	48	23	4.5	3.4	6	3	3.5
#10	- 24UNC	T7363329	14	52	26	6	4.9	6	3	3.9
#12	- 24UNC	T7363369	16	56	27	6	4.9	8	3	4.5
1/4	- 20UNC	T7363409	16	56	27	6	4.9	8	3	5.2
5/16	- 18UNC	T7363449	20	63	34	6	4.9	8	3	6.6
3/8	- 16UNC	T7363489	22	70	38	7	5.5	8	4	8
7/16	- 14UNC	T7363529	22	70	38	8	6.2	9	4	9.4
1/2	- 13UNC	T7363569	25	80	45	9	7	10	4	10.75
9/16	- 12UNC	T7363609	26	80	45	11	9	12	4	12.25
5/8	- 11UNC	T7363649	27	90	55	12	9	12	4	13.5
3/4	- 10UNC	T7363709	32	105	65	14	11	14	4	16.5
7/8	- 9UNC	T7363749	32	110	69	18	14.5	17	4	19.5
1	- 8UNC	T7363789	36	110	69	20	16	19	4	22.25
1-1/8	- 7UNC	T7363829	40	125	77	22	18	21	4	25
1-1/4	- 7UNC	T7363869	40	125	77	25	20	23	4	28.25
1-1/8	- 6UNC	T7363909	50	150	88	28	22	25	4	30.75
1-1/2	- 6UNC	T7363949	50	150	88	32	24	27	4	34
1-3/4	- 5UNC	T7363989	58	160	93	36	29	32	4	39.5
2	- 4½UNC	T7363D29	65	180	102	40	32	32	4	45.25

THREAD MILLS

CARBIDE TAPS

PRIME TAPS

COMBO TAPS

SPIRAL FLUTE TAPS

SPIRAL POINT TAPS

STRAIGHT FLUTE TAPS

COLD FORMING TAPS

NUT TAPS

STI TAPS

HAND TAPS

PIPE TAPS

TECHNICAL DATA

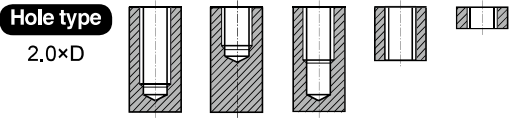
YG HAND TAPS



T7509 SERIES

UNF Unified fine threads

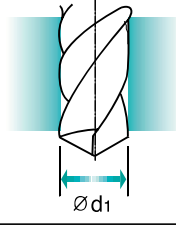
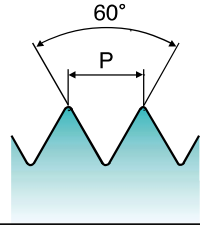
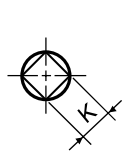
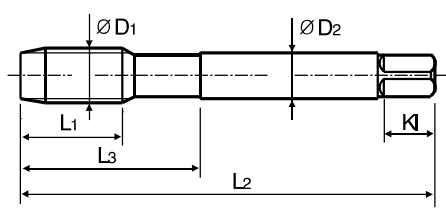
 Unified Feingewinde
 UNF
 Unificato passo fine

- ▶ Serial hand tap set in First and Bottoming.
- ▶ Bottoming tap of set has final internal thread dimensions only.
- ▶ Handgewindebohrersatz mit Vor- und Fertigschneider.
- ▶ Nur der Fertigschneider kann das gewünschte Gewinde schneiden.



Material groups **GS** **HSS** **DIN 2181** **2B**   **Bright**

Sets of taps
Gewindebohrer-Satz



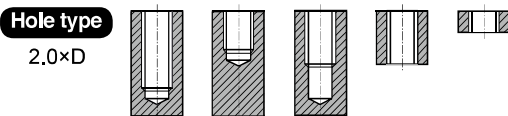
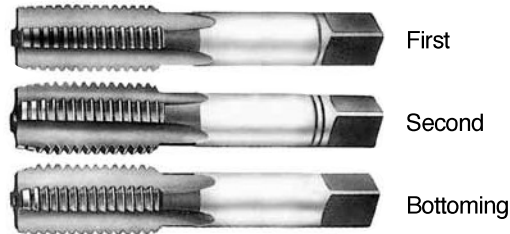
Unit : mm

SIZE	TPI	EDP No.	Thread Length	Overall Length	Neck Length	Shank Diameter	Square Size	Square Length	No. of Flute	Tapping Drill Diameter
ØD1		Bright	L1	L2	L3	ØD2	K	KI	Z	Ød1
#4	- 48 UNF	T7509189	10	42	18	3.5	2.7	6	3	2.4
#5	- 44 UNF	T7509229	10	42	18	3.5	2.7	6	3	2.7
#6	- 40 UNF	T7509269	11	45	18	4	3	6	3	3
#8	- 36 UNF	T7509309	12	48	23	4.5	3.4	6	3	3.5
#10	- 32 UNF	T7509349	14	52	22	6	4.9	8	3	4.1
#12	- 28 UNF	T7509389	16	56	24	6	4.9	8	3	4.7
1/4	- 28 UNF	T7509429	16	56	24	6	4.9	8	3	5.5
5/16	- 24 UNF	T7509469	17	63	27	6	4.9	8	3	6.9
3/8	- 24 UNF	T7509509	18	63	27	7	5.5	8	4	8.5
7/16	- 20 UNF	T7509549	20	70	32	8	6.2	9	4	9.9
1/2	- 20 UNF	T7509589	20	70	32	9	7	10	4	11.5
9/16	- 18 UNF	T7509629	20	70	32	11	9	12	4	12.9
5/8	- 18 UNF	T7509669	20	70	32	12	9	12	4	14.5
3/4	- 16 UNF	T7509729	22	80	38	14	11	14	4	17.5
7/8	- 14 UNF	T7509769	22	80	38	18	14.5	17	4	20.5
1	- 12 UNF	T7509809	22	90	40	18	14.5	17	4	23.25
1-1/8	- 12 UNF	T7509849	22	90	40	22	18	21	4	26.5

BSW Whitworth threads

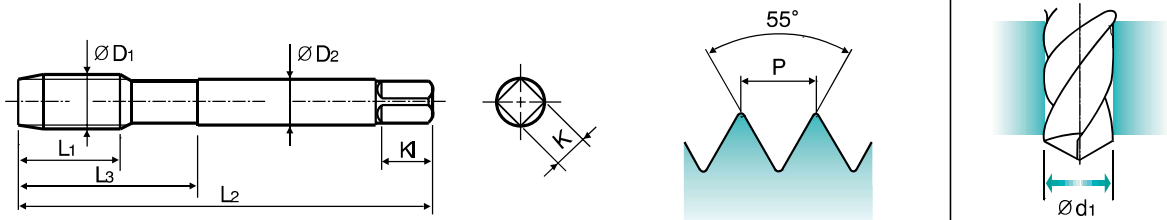
■ Whitworth Gewinde
■ BSW
■ Filettatura Whitworth

- ▶ This tap is a serial hand tap in set, First, Second and Bottoming.
- ▶ Bottoming tap of set has final internal thread dimensions only.
- ▶ Dies ist ein Handgewindebohrer im Satz mit Vor-, Mittel- und Fertigschneider.
- ▶ Nur der Fertigschneider kann das gewünschte Gewinde schneiden.



Material groups **GS** HSS DIN 351 55° Bright

Sets of taps
Gewindebohrer-Satz



Unit : mm

SIZE	TPI	EDP No.	Thread Length	Overall Length	Neck Length	Shank Diameter	Square Size	Square Length	No. of Flute	Tapping Drill Diameter
ØD1		Bright	L1	L2	L3	ØD2	K	KI	Z	Ød1
W3/32 - 48		T7609129	10	40	15	2.8	2.1	5	3	1.8
W1/8 - 40		T7609209	10	42	18	3.5	2.7	6	3	2.5
W5/32 - 32		T7609289	12	48	23	4.5	3.4	6	3	3.1
W3/16 - 24		T7609329	14	52	26	6	4.9	8	3	3.6
W7/32 - 24		T7609369	16	56	27	6	4.9	8	3	4.4
W1/4 - 20		T7609409	16	56	27	6	4.9	8	3	5.1
W5/16 - 18		T7609449	20	63	34	6	4.9	8	3	6.5
W3/8 - 16		T7609489	22	70	38	7	5.5	8	4	7.9
W7/16 - 14		T7609529	22	70	38	8	6.2	9	4	9.3
W1/2 - 12		T7609569	25	80	45	9	7	10	4	10.5
W9/16 - 12		T7609609	26	80	45	11	9	12	4	12
W5/8 - 11		T7609649	27	90	55	12	9	12	4	13.5
W3/4 - 10		T7609709	32	105	65	14	11	14	4	16.5
W7/8 - 9		T7609749	32	110	69	18	14.5	17	4	19.25
W1 - 8		T7609789	36	110	69	20	16	17	4	22
W1-1/8 - 7		T7609829	40	125	77	22	18	21	4	24.75
W1-1/4 - 7		T7609869	40	125	77	25	20	23	4	27.75
W1-3/8 - 6		T7609909	50	150	88	28	22	25	4	30.5
W1-1/2 - 6		T7609949	50	150	88	32	24	27	4	33.5
W1-5/8 - 5		T7609B29	56	150	88	32	24	27	4	35.5
W1-3/4 - 5		T7609B89	58	160	93	36	29	32	4	39
W1-7/8 - 4½		T7609C69	65	180	102	36	29	32	4	41.5
W2 - 4½		T7609D29	65	180	102	40	32	35	4	44.5

THREAD MILLS

CARBIDE TAPS

PRIME TAPS

COMBO TAPS

SPIRAL FLUTE TAPS

SPIRAL POINT TAPS

STRAIGHT FLUTE TAPS

COLD FORMING TAPS

NUT TAPS

STI TAPS

HAND TAPS

PIPE TAPS

TECHNICAL DATA



Global Cutting Tool Leader **YG-1**



G(BSP) Whitworth Pipe threads DIN ISO 228/1
 Whitworth Rohrgewinde DIN ISO 228/1
 G(BSP) PROFIL 55° DIN ISO 228/1
 Filettatura Whitworth per tubi DIN ISO 228/1

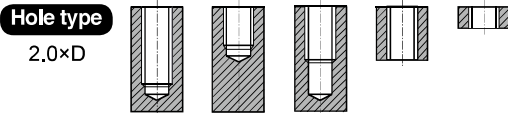
- ▶ Serial hand tap set in First and Bottoming.
- ▶ Bottoming tap of set has final internal thread dimensions only.
- ▶ Handgewindebohrersatz mit Vor- und Fertigschneider.
- ▶ Nur der Fertigschneider kann das gewünschte Gewinde schneiden.



First

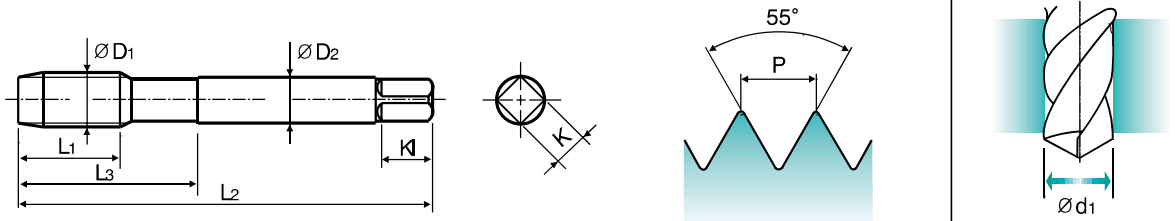


Bottoming



Material groups **GS** HSS DIN 5157 55° I/III Bright

Sets of taps
Gewindebohrer-Satz



Unit : mm

SIZE	TPI	EDP No.	Thread Length	Overall Length	Neck Length	Shank Diameter	Square Size	Square Length	No. of Flute	Tapping Drill Diameter
ØD1		Bright	L1	L2	L3	ØD2	K	KI	Z	Ød1
G1/16	- 28	T7709029	22	56	26	6	4.9	8	3	6.8
G1/8	- 28	T7709209	20	63	27	7	5.5	8	4	8.8
G1/4	- 19	T7709409	22	70	32	11	9	12	4	11.8
G3/8	- 19	T7709489	22	70	32	12	9	12	4	15.25
G1/2	- 14	T7709569	22	80	35	16	12	15	4	19
G3/4	- 14	T7709709	22	90	40	20	16	19	4	24.5
G1	- 11	T7709789	25	100	45	25	20	23	6	30.75
G1-1/4	- 11	T7709869	40	125	77	32	24	27	6	39.5
G1-1/2	- 11	T7709949	40	140	85	36	29	32	6	45.2

THREAD MILLS

CARBIDE TAPS

PRIME TAPS

COMBO TAPS

SPIRAL FLUTE TAPS

SPIRAL POINT TAPS

STRAIGHT FLUTE TAPS

COLD FORMING TAPS

NUT TAPS

STI TAPS

HAND TAPS

PIPE TAPS

TECHNICAL DATA